

DOPAK® Process Sampler Type DPT

in line, continuous needle purge configuration

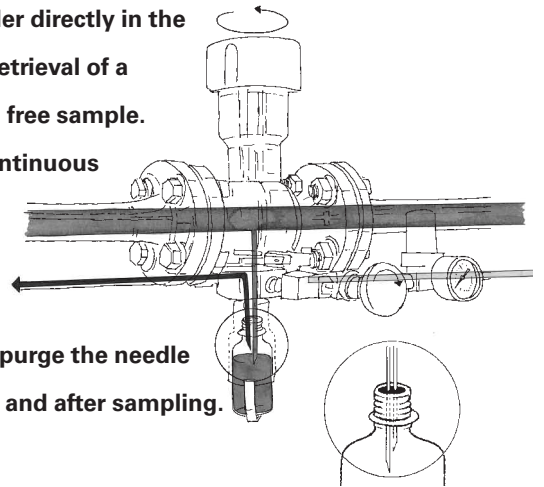


The ability to install the sampler directly in the process line ensures optimal retrieval of a representative, contamination free sample.

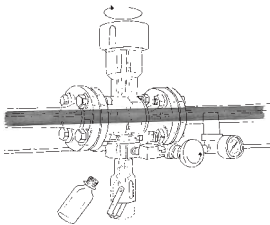
The DPT type of sampler in continuous needle purge configuration

allows the product to flow directly into the sampler via

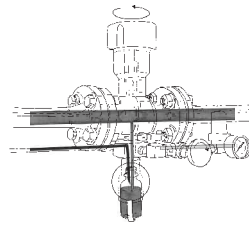
an in line sample valve and to purge the needle assembly continuously before and after sampling.



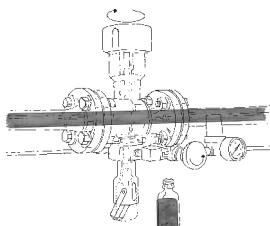
1 OPERATION/FUNCTION



0 - off
Provide a new septum on your sample bottle. Insert the sample bottle, with cap and septum into the sleeve until the septum is pierced by the needles. Put the bottle retaining clip in place. A flow of inert gas purges needle assembly and sample bottle continuously.

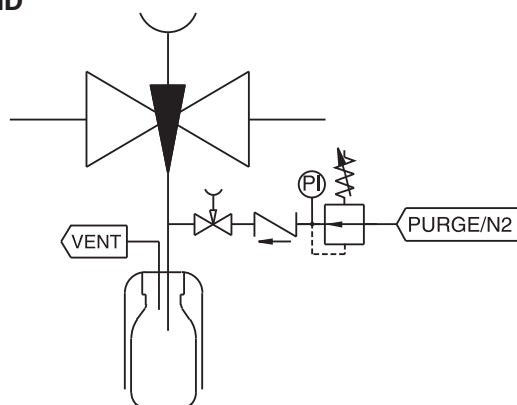


1 - sample
Turn the knob in the "sample" position allowing the product to flow into the sample bottle. When the required amount has been taken, turn the knob to the "off" position.



2 - off
A flow of inert gas purges needle assembly and sample bottle continuously. Remove the bottle retaining clip and pull the bottle out from the sleeve. The septum reseals automatically.

2 TYPICAL P & ID



3 FEATURES/ADVANTAGES/PROPERTIES

- | | | | |
|--------------------------|--|--------------------------|---|
| <input type="checkbox"/> | Sampling directly under process conditions | <input type="checkbox"/> | Closed sampling |
| <input type="checkbox"/> | Low pressure applications | <input type="checkbox"/> | Continuous purging of needle assembly and sample bottle |
| <input type="checkbox"/> | Representative sampling | | |
| <input type="checkbox"/> | Zero dead volume | | |

4 BASIC SPECIFICATIONS

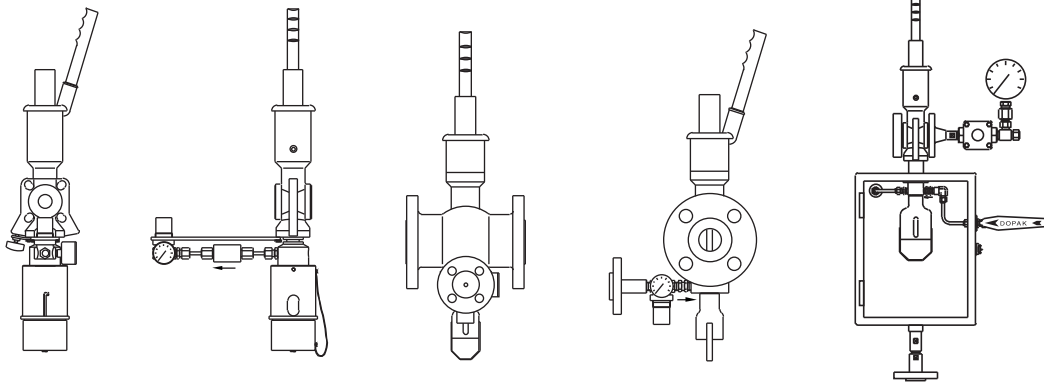
Material	SS316, SS316L.	
Sleeve Type	60cc sleeve with bottle retaining clip.	
Needle Assembly	Single piece VTO needle assembly with vent to outlet connection 1/4" FNPT. Process/vent needle ID: 1.35 mm.	
Valve	In line valve. PTFE seats, Viton A O-ring. Pressure range 16 bar@20°C. Temperature range -40/+140°C (-40/+392°F).	
Operation	Manual.	
Connections	Process: 1-150 lbs. RF ANSI B16.5 flanges. Vent/purge: 1/4" FNPT.	

Please note: the above is a basic specification only. Dopak Samplers can be offered with a wide variety of options as mentioned below.

5 OPTIONS

- | | | | |
|--------------------------|-----------------------|--------------------------|----------------------------|
| <input type="checkbox"/> | Spring return handle | <input type="checkbox"/> | Exotic materials |
| <input type="checkbox"/> | Lockable handle | <input type="checkbox"/> | Larger/smaller sample size |
| <input type="checkbox"/> | Enclosure | <input type="checkbox"/> | Spindle extension |
| <input type="checkbox"/> | Steam sterilising cap | <input type="checkbox"/> | Bellow seals |
| <input type="checkbox"/> | Welded connection | <input type="checkbox"/> | PFA lined valves |
| <input type="checkbox"/> | Wafer style valves | <input type="checkbox"/> | Steam jacket |

For more information please refer to our sheets:
Options for DOPAK® process sampler type DPT.
Components for DOPAK® process samplers.



Dopak Inc.
Houston, Texas 77041, USA
Phone 713-460-8311
Fax 713-460-8578
E-mail info@dopak.com

Dovianus BV
Bergschenhoek, The Netherlands
Phone +31 10 542 20 00
Fax +31 10 456 67 74
E-mail info@dopak.nl

Your local representative: